

A
PLACE^{TO} CALL
HOME



Australia's number one drama is back

A PLACE TO CALL HOME WAS THE MOST-WATCHED AUSTRALIAN DRAMA SERIES OF 2013.

It was lauded by critics who hailed it 'mesmerising', 'captivating' and 'a class act.' With a combined weekly audience of 2.2 million viewers each week, it cemented its place in TV history and people's hearts.

Last year's dramatic finale saw the lives of the Bligh family imploding.

After paying off Bert to keep him quiet about his son James' sexuality, George was furious when he attempted to extort more money for him.

Shortly afterwards, Bert's body was seen floating on the surface of the river.

The first few minutes of the new series will continue to keep everyone guessing. A seemingly typical morning at Ash Park is revealed to be something else entirely...

Season one saw mysterious nurse Sarah Adams put down tentative roots in the picturesque town of Inverness.

Working her passage home aboard an ocean liner, Sarah came into contact with wealthy pastoralists the Bligh family when she saved the life of the troubled James Bligh.

Holding the secret of James' attempted suicide forever linked Sarah's future with the Blighs.

Over time, her connection with charming widower George Bligh developed into love, and the unexpected romance helped Sarah move on from the death of her beloved husband Rene, murdered by the Nazis.

This series will see Sarah move into Ash Park and work to prove herself a fitting wife-to-be for George, while his mother Elizabeth plays a devious waiting game to see what Regina will unearth about Sarah's past in Europe.

Little does Sarah know, Elizabeth will uncover information that blows life as Sarah knows it sky-high...

Meanwhile, Jack is furious at Carolyn for having kept secret the fact they have a daughter. She refuses to reveal the child's name, wanting to protect the current status quo. Increasingly upset and angry, Jack announces he's going to find out the identity of their daughter, no matter what.

Anna arrives at the Poletti farm for a three-month trial to see if her relationship with Gino can survive. And in the city, Olivia is increasingly disturbed by the savage nature of James' treatment to 'cure' his homosexuality.

Which secrets will come out? Which secrets will be buried?

A Place to Call Home is created by Bevan Lee, the man behind iconic Australian shows such as Packed to the Rafters, Always Greener and Winners & Losers.

The cast features MARTA DUSSELDORP as Sarah Adams, NONI HAZLEHURST as Elizabeth Bligh, BRETT CLIMO as George Bligh, CRAIG HALL as Dr. Jack Duncan, SARA WISEMAN as Carolyn Bligh, DAVID BERRY as James Bligh, ARIANWEN PARKES-LOCKWOOD as Olivia Bligh, ABBY EARL as Anna Bligh, ALDO MIGNONE as Gino Poletti, MATT LEVETT as Andrew Swanson and FRANKIE J. HOLDEN as Roy Briggs.

A PLACE TO CALL HOME on 7

SARAH ADAMS

PLAYED BY MARTA DUSSELDORP

THE FIRST SEASON SAW ENIGMATIC NURSE SARAH ADAMS PUT DOWN TENTATIVE ROOTS IN THE PICTURESQUE TOWN OF INVERNESS, AND BEGIN TO HEAL FROM THE HORRORS SHE EXPERIENCED DURING WORLD WAR TWO.

Working her passage home aboard an ocean liner, Sarah came into contact with wealthy Australian pastoralists the Bligh family, when she saved the life of the troubled James Bligh. A newlywed tormented by his homosexuality, Sarah's unwitting discovery of his potentially scandalous family secret forever linked her future with the Blighs.

Her immediate connection to James' father, charming widower George Bligh, saw Sarah settle in Inverness, near the Bligh's beautiful estate, Ash Park. Over time, their connection developed into love, and the unexpected romance helped Sarah move on from the death of her beloved husband Rene, murdered by the Nazis.

Sarah now feels very much at home in Inverness, forming close friendships with local widower Roy Briggs and her employer, Dr. Jack Duncan. George isn't the only heart Sarah won, with Jack also professing his love for her. He's accepted she's in no position to return his feelings, and the experience has ultimately strengthened their friendship.

Sarah's love affair with George has ruffled the feathers of uncompromising matriarch Elizabeth Bligh. Fiercely protective of the Bligh legacy, Elizabeth has employed every weapon in her significant arsenal to try to thwart the romance, even stripping her son George of his Ash Park inheritance.

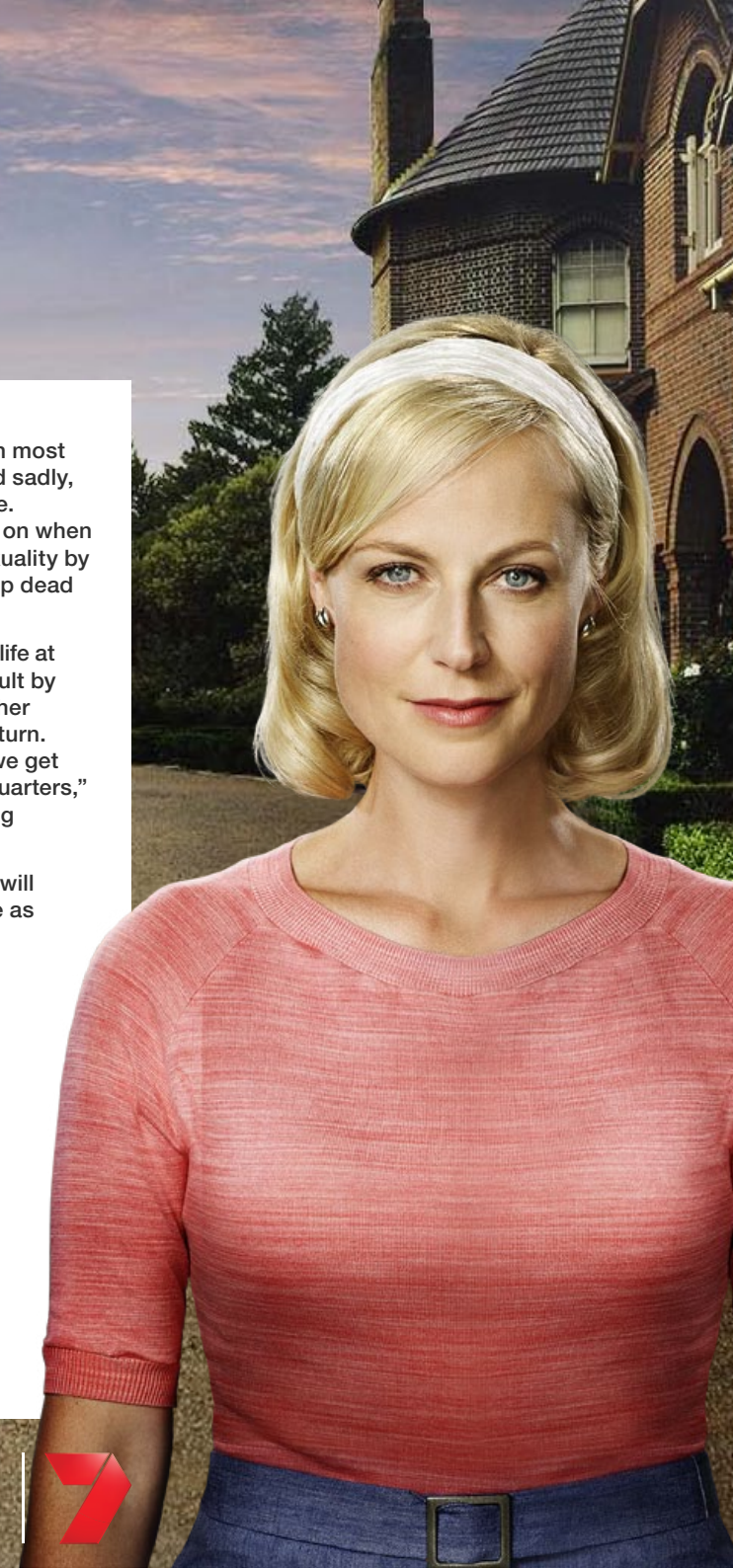
A convert to Judaism for her husband, Sarah is well aware of the vast chasm that exists between her and the upper echelons of Australian society. It's a challenge she's more than ready to take on.

Determined to prove Sarah out of her depth, Elizabeth sets her a formidable task. If Sarah can demonstrate she fits into the Bligh's social milieu, Elizabeth will reinstate George as the heir to Ash Park. Although she knows Elizabeth is setting her up to fail, Sarah believes she owes it to George to at least try for his sake, and accepts the challenge.

Sarah is painfully aware more than most that humanity has a dark side, and sadly, even idyllic Inverness isn't immune. Sarah's forced to confront it head on when James is blackmailed over his sexuality by local thug Bert Ford – who turns up dead soon after.

This series sees Sarah negotiating life at Ash Park, made all the more difficult by Elizabeth's attempts to sabotage her relationship with George at every turn. "Sarah moves into Ash Park and we get to see her and Elizabeth at close quarters," Marta says. "It's a really interesting relationship, it's a poker game."

Little does Sarah know, Elizabeth will unearth information that blows life as Sarah knows it sky-high.



A PLACE TO CALL HOME on



MARTA DUSSELDORP

STARS AS SARAH ADAMS

DISTINGUISHED ACTRESS MARTA DUSSELDORP SPEARHEADS THE TALENTED A PLACE TO CALL HOME CAST AS THE ENIGMATIC SARAH ADAMS.

The award-winning actress gravitated towards performing early in life. She took ballet lessons from the age of four but it was her first speaking role in a school play which sparked her interest in acting.

"I would have been about 10 or 11," she recalls. "I did my first play and got my first laugh. I remember hearing 300 people who were in the school hall laugh out loud and I thought, 'This is brilliant to be able to bring joy to people.'"

"When I started using my voice, I realised the power of narration. I became addicted to telling stories – initially it was with my body through dance and then I discovered my voice."

After finishing school, she studied at the University of NSW for two years, majoring in theatre and film, before being accepted into the Victorian College of the Arts.

Soon after graduating in 1996, she received her big break in Bruce Beresford's *Paradise Road*, acting opposite Glenn Close, Frances McDormand and Cate Blanchett.

Since then she has worked extensively in theatre, film and television. Her film credits include the critically acclaimed *Praise*, *Innocence* and *Burning Man*.

On the small screen, Marta has starred as Detective Sam Lawson in six *Blackjack* telemovies. Her other TV credits include the telemovie *Hell Has Harbour Views*, the award-winning mini-series *After The Deluge*, Jack Irish opposite Guy Pearce, the ABC legal drama *Crownies* and more recently *Janet King*.

Regarded as one of the country's best stage actors, she was one of 12 actors who, in 2005, were offered exclusive contracts by the Sydney Theatre Company to form The Actors Company.

During her three years with the STC, she appeared in *The War of the Roses*, which won her a Helpmann Award for Best Supporting Actress in 2009; *Serpent's Teeth*, *Mother Courage* and Barrie Kosky's eight-hour *The Lost Echo*.

Her other notable theatre credits include Melbourne Theatre Company's *Three Sisters* and *The Balcony*, Company B's national tour of *The Underpants*, an international tour of *Cloudstreet* and *Like A Fishbone* for the STC/Griffin Theatre; the STC production *Victory* opposite Judy Davis and most recently *Never Did Me Any Harm*, a dance theatre work by acclaimed choreographer Kate Champion.

With a career spanning more than two decades, her resume is teeming with highlights but she counts her theatre credits as her most memorable. "Playing to an audience is exhilarating and dangerous, one of the truest forms of human contact you have," she says.

However, she's relishing the opportunity of sinking her teeth into a complex character she can develop over the course of a series.

"That's the beauty of television; you have the opportunity to explore an amazing character over however many episodes and you don't get that with a play," she says. "Right now I'm in heaven. This is something I used to dream of."

Marta, 41, is married to actor/director Ben Winspear, whom she met more than a decade ago when they were both working at the Sydney Theatre Company. They reside in Sydney with their two daughters.



A PLACE ^{TO} CALL HOME on 7

ELIZABETH BLIGH

PLAYED BY NONI HAZLEHURST

FIERCELY PROTECTIVE OF THE BLIGH DYNASTY, MATRIARCH ELIZABETH WILL DO ANYTHING IN HER FORMIDABLE POWER TO ENSURE THE CONTINUED SUCCESS OF THE FAMILY NAME.

A product of her generation, Elizabeth has made many sacrifices for the sake of her family, putting propriety ahead of her own personal happiness. She sets unbending standards for herself and expects the same of others, and this exacting standard sees Elizabeth increasingly at odds with those around her.

Her son George's romance with Sarah (a nurse and a Jew no less) is perceived as a threat to everything she holds dear – and for that reason, she will fight long and hard to rid herself of the “menace”.

Such an iron-will comes at a cost. Season one saw Elizabeth in hospital after suffering a heart attack. But even from her hospital bed, she was able to manipulate events, enlisting the help of wily Regina Standish (George's sister-in-law) in her efforts to destroy Sarah.

In an attempt to shock George into submission, Elizabeth changed her will to make grandson James the beneficiary of the estate instead of George. She makes it clear she will only reverse the decision when George ends the affair. But George is his mother's son, and made of stern stuff. To Elizabeth's dismay, her ultimatum has the opposite effect, with George going straight to Sarah and proposing.

Elizabeth's need for control puts her at frequent loggerheads with her headstrong granddaughter Anna. Anna's passionate romance with Italian farmhand Gino is a constant source of dismay for Elizabeth, who is convinced the union is doomed, and will break Anna's heart and ruin her reputation in the process.

Elizabeth does what she can to neutralise potential scandal, even boldly enlisting the help of local busy-body Doris Collins. But when Sarah, sympathetic to Anna's situation, helps orchestrate Anna's move to the Poletti farm for a three-month trial, even Elizabeth's impressive ability to quell gossip will be severely tested.

Ever resourceful, Elizabeth applies the same test to Sarah. Having thrown every obstacle in Sarah's path she could think of, Elizabeth changes tack and invites her into her own home, hoping to highlight the social divide between Sarah and George and thereby instill doubts in her son about the relationship.

“I think inviting Sarah into the house is so uncharacteristic for Elizabeth,” Noni says. “There has to be some sort of agenda and of course there is.”

Armed with Sarah's stolen employment records to aid her search, Regina is dispatched to Europe to uncover anything from Sarah's mysterious past that may rid them of the woman forever.

In season two, the information Regina uncovers forever changes the state of play – and the subsequent fallout runs the risk of destroying Elizabeth's relationship with her family.

Elizabeth realises that regaining her family's respect will require an audacious move – something that no-one thinks she is capable of. It's a decision only a remarkable woman such as Elizabeth Bligh has the courage to do.



NONI HAZLEHURST

STARS AS ELIZABETH BLIGH

NONI HAZLEHURST'S NUMEROUS TALENTS HAVE MADE HER A HOUSEHOLD NAME.

She is one of Australia's most distinguished and respected actors with a career spanning over 40 years.

Born in Melbourne in the 1950s to vaudevillian parents, show business was the natural choice for Noni. "It never occurred to me to do anything else," she says. "Once they realised I had the ambition and talent, they encouraged me and made sure I was well prepared."

She learned how to sing, dance, act and play piano; her versatility serving her well throughout her long career. After finishing school, she began studying drama at Flinders University in Adelaide in 1971.

She graduated three years later and landed her first role as Sharon Lewis in *The Box* in 1975 before joining the cast of *The Sullivans* as Lil Duggan in 1976. More roles followed in the critically acclaimed telemovies *The Shiralee* and *Nancy Wake*.

In 1978, she became a presenter on iconic children's show *Play School*, becoming one of their most loved faces for the next 24 years. In a career bursting with highlights,

it's a role she still considers her favourite and in 1998 she was honoured with an Order of Australia (AM) for her services to children and children's television. In the 1990s, Noni hosted *Better Homes and Gardens*. During her 10 years with the program, it won five Logie Awards for Most Popular Lifestyle Show.

Noni herself has received two Logies for her performances in the mini-series *Waterfront* and *Ride on Stranger* as well as four AFI Awards for *Little Fish*, *Waiting At The Royal*, *Fran* and *Monkey Grip*. She's also received three AFI nominations for her roles in *Fatty Finn*, *Bitter & Twisted* and *Candy*, acting opposite Heath Ledger and Geoffrey Rush.

Her recent screen credits include the telemovies *Stepfather of the Bride* in 2006 and *Curtin* (2007) and the gritty drama *City Homicide*, where she played Detective Superintendent Bernice Waverley from 2007-2011.

In 2007, she added another notch to her impressive list of awards when she was bestowed an Honorary Doctorate of Philosophy from Flinders University in South Australia. Other notable awards include a Variety Club Award for Achievement in Television and two Film Critic's Circle of Australia Awards.

Her theatre credits are extensive, working not only on London's West End but across the country. Most recently she played a straight talking scientist in the Melbourne Theatre Company's production of *The Heretic*.

As National Ambassador for children's charity Barnardos, Noni thrives on her charity work and is also an in-demand writer, penning articles for newspapers and magazines, as well as contributing to several books. "I love it all," she says.

"I don't really care what I'm doing as long as it's a story worth telling and I'm working with people I respect." Her most prized role is as mother to sons Charlie and William, who are both musicians.

When she's not working, Noni enjoys gardening, cooking and teaching drama at the 16th Street Acting Studio. "It's wonderful and rewarding," she says of her role as mentor and teacher.

In the future, Noni's keen to do more directing. Her directorial debut *The Fish Are Safe* garnered an AFI nomination for Best Achievement in Direction in 2005. "There is plenty of wonderful work still to be done."



GEORGE BLIGH

PLAYED BY BRETT CLIMO

SENSITIVE LANDOWNER GEORGE BLIGH BEGAN TO EMERGE FROM HIS INDOMITABLE MOTHER'S SHADOW AND EMBRACE A LIFE OF HIS OWN IN SEASON ONE.

Having lost his adored wife Elaine during the bombing of Darwin, George takes tentative steps towards love again, falling for the enigmatic Sarah Adams – much to the irate disapproval of Elizabeth.

The romance, and his mother's opposition to it, constantly tests his resolve. Determined to put his own happiness first for once, George proposes, and is delighted when Sarah accepts.

His biggest emotional challenge was the discovery of his beloved son James' secret attraction to men. Torn between love for his son and disgust, George battles to keep the news from becoming public and ruining his son's life forever.

He confronts James, unable to mask his revulsion, suggesting it may have been better if James had succeeded in killing himself on the ship. The ugly exchange triggers an emotional breakdown in his already conflicted son. George isn't proud of his reaction but finds it difficult to shake a lifetime of social conditioning.

George's attempts to put it all behind him are thwarted when local thug Bert Ford blackmails him over James' sexuality. George pays up, hoping to buy his silence, but is pushed to breaking point when Bert refuses to go quietly as arranged.

When Bert's body is found in the river, the question has to be asked – what lengths was George willing to take in order to protect his family?

This season sees George continue to be challenged to overcome the conditioning of his upbringing and be a more open-minded man.

Influenced by Sarah's love, George has a choice – put propriety above all else like his mother, or allow himself to be guided by his heart. In 1950s Australia, it's not an easy choice for a man to make.

“Coming into season two, so much is thrown at George, he really is being pushed in a way that he really can't help but become an open minded man,” Brett says.



A PLACE ^{TO} CALL HOME on 7

BRETT CLIMO

STARS AS GEORGE BLIGH

BRETT CLIMO HAS WORKED IN MANY OF AUSTRALIA'S MOST SUCCESSFUL DRAMAS IN A CAREER SPANNING OVER THREE DECADES.

His role on *A Place to Call Home* marked his return to Channel Seven, the network where he made his television acting debut in 1983 on the classic soap *Sons and Daughters*.

"It's a dream come true," he said after winning the role of George Bligh. "It's wonderful to be part of a show which is so expertly crafted."

Brett began acting lessons when he was in high school. His mother was concerned he wasn't performing academically so enrolled him in classes, where he showed talent. "I needed something to spark my interest and one thing led to another."

After finishing school, he began doing TV commercials and extra work before landing his first TV role. His big break came in 1987 in the critically acclaimed mini-series *Vietnam*. "I'm still very proud of my work in that. I worked with such talented and respected people like John Duigan and Chris Noonan."

Brett then scored a permanent role in the much-loved *A Country Practice* as nurse Michael Langley, which he played from 1987-1989. "It's lovely to think you've made something that someone has watched and enjoyed," he says of his most recognisable role. "It gave me a healthy idea of what acting is. It was my first full-time role and I really wanted that security."

He'd just met chef Michelle Louis, who would go on to become his wife. "We'd just begun dating and I remember really wanting to provide us with some sort of stability." More TV appearances followed in *Embassy*, *G.P.*, mini-series *Tracks of Glory*, *Snowy* and *Body Melt* before he landed a role on *The Flying Doctors* as Dr David Ratcliffe, which he played from 1987-94.

After roles in *Pacific Drive*, *Snowy River: The McGregor Saga*, *Murder Call* and *Halifax f.p.: Without Consent*, he returned to Channel Seven in *Blue Heelers* playing Lisa McCune's bad boy brother Robbie Doyle, from 1997-98.

He's worked consistently since then landing parts in *Water Rats*, *Stingers*, *Something in the Air*, *City Homicide*, *The Elephant Princess*, *Cops LAC* and *All Saints*, playing Dr Malcolm Pussle, a love interest of Georgie Parker's character Sister Terri Sullivan.

More recently he was seen in *Underbelly Files: Tell Them Lucifer Was Here*, *Killing Time* and the docudrama *Myall Creek*.

His film credits include *Lost and Found*, where he starred alongside Rebecca Gibney and *A Place to Call Home* co-star Frankie J. Holden, Ana Kokkinos' *Blessed*, *Wild Poppies*, *Double Vision*, *The Inner Sanctuary*, *Blackwater Trail*, *The Wicked* and *Going Sane*.

Brett has performed on stage in *The Lady in the Van* for the Sydney Theatre Company; *Fred and Hay Fever* for the Melbourne Theatre Company; *The Ishmael Club* and *Crazy Brave* for Playbox Theatre; and *A Hard God* for the Queensland Theatre Company.

In his spare time, his interests include travelling as well as home renovation and design. "If I wasn't an actor, I would have loved to have been an architect."

Originally from Sydney, Brett, 49, now lives in Melbourne with Michelle, a hospitality/training manager.



A PLACE ^{TO} CALL HOME on 7

DR JACK DUNCAN

PLAYED BY CRAIG HALL

DR. JACK DUNCAN HAS HAD A TUMULTUOUS YEAR. INDEBTED TO ELIZABETH BLIGH FOR FUNDING HIS MEDICAL TRAINING, JACK FINDS HIMSELF CAUGHT IN THE MIDDLE OF HER CAMPAIGN AGAINST NURSE SARAH ADAMS.

Tortured by the Japanese as a POW, Jack is a private man, with many dark secrets. A teetotaler, the tragic suicide of a former army mate nearly sent Jack back to the bottle. It was only the intervention of long-time ally Elizabeth that saved him from his demons.

Working closely with Sarah, Jack found himself drawn to his enigmatic nurse, sensing a similar troubled soul scarred by her own wartime experiences.

For Jack, the past returned with terrifying clarity when he was forced to face his enemy once again at a reception for the Japanese, hosted by George Bligh.

The harrowing experience made Jack fall off the wagon, to be rescued by Sarah. Under the influence of alcohol, Jack told Sarah he loved her, and was embarrassed when she gently spurned his affections.

The experience drew them even closer, deepening their friendship. But nothing can prepare Jack for the biggest shock of all - the return of his first love, Carolyn Bligh, with the bombshell that he fathered a child.

This series sees Jack embark on a quest to find out the identity of his daughter, unaware that it is none other than Anna.

Thrown into close proximity with Carolyn Bligh for the first time in years, Jack is reminded of the reasons why he was attracted to her so long ago, and begins to fall for her all over again.

But he's not the man he once was, and the scars from his wartime experiences will come back to haunt him. "In series two, Jack is forced to reveal his darkest secret, a secret which threatens to rob him of the one thing he wants most," Craig says.



A PLACE ^{TO} CALL HOME on 7

CRAIG HALL

STARS AS DR JACK DUNCAN

CRAIG HALL IS AN ESTABLISHED ACTOR OF BOTH THE SCREEN AND STAGE.

Born and raised in Auckland, Craig remembers vividly the moment when he first decided to become an actor.

It was Michael J Fox's star-turn as Marty McFly in Back to the Future which convinced the then 10-year-old acting was for him.

"I remember seeing that film and thinking, 'Wow! I'd like to do that!'" he laughs.

He convinced his dad to take him to an agency after spotting an advertisement for film extras in a newspaper. Nothing came of it at that point because, as Craig puts it, he "had braces and looked a complete mess" but the budding actor didn't give up.

A workshop in 1993 with acting coach Kenneth McGregor, who was in New Zealand working on The Piano, opened doors for him after Kenneth recommended him to an agency.

It led to parts in short films and ad work before he scored a role on the TV series Hercules in 1996.

More TV roles followed. Craig's recent TV work includes: Outrageous Fortune, East Of Everything, Underbelly: Razor, Tricky Business, Rake and the telemovie Bloodlines, in which he won the 2011 AFTA for Best Supporting Actor. Most recently he was seen in the mini-series Howzat! as Gavin Warner and an episode of Miss Fisher's Murder Mysteries.

Craig made his feature film debut in 1998 in Savage Honeymoon and further movie roles continued in King Kong, The World's Fastest Indian, The Water Horse, Boy, Love Birds, The Devil's Rock, Show Of Hands, 30 Days of Night, Eagle vs Shark and most recently The Hobbit: The Desolation of Smaug, his second film with Peter Jackson.

Craig also has a strong theatre background having performed in various stage productions with his most recent performances being Killer Joe in 2009 and The Lover in 2010.

Craig moved to Sydney in 2011 with his wife, actress and costar Sara Wiseman, whom he met over a decade ago whilst working on a short film. He lists Sara, who is also a household name in New Zealand, as one of his favourite actors. "My wife is an amazing actress," he says proudly. "She's very inspiring to me."

Away from work, Craig enjoys riding motorcycles, martial arts and yoga.



A PLACE ^{TO} CALL HOME on



CAROLYN BLIGH

PLAYED BY SARA WISEMAN

THE BLACK SHEEP OF THE BLIGH FAMILY, CAROLYN HAS SPENT MOST OF HER ADULT LIFE LIVING IN THE CITY, FAR FROM THE STUFFY ENVIRONS OF ASH PARK AND THE CONTROLLING ORBIT OF HER MOTHER ELIZABETH.

Whilst at university, young Carolyn fell pregnant to the great love of her life, Jack Duncan. Determined to avoid any scandal, Elizabeth bundled her daughter overseas to give birth to the baby without anyone knowing.

To protect Jack from possible ruin, Carolyn ended their relationship, breaking his heart in the process and keeping him in the dark about what had taken place. Her daughter Anna was raised by Carolyn's brother George and his wife Elaine, with Carolyn forced to play the role of aunty.

To protect herself, Carolyn fled to the relative safety of the city, hiding her heartache behind a façade of bohemian parties and the company of glorious misfits. A life she came to embrace.

History seemed to be repeating when Anna arrived on Carolyn's doorstep, seeking help for an unexpected pregnancy. The situation enabled Carolyn to finally be honest with Anna. She supported her daughter's need to process things in her own time, deciding not to tell George she knew the truth.

Seeking advice on what to say if Anna ever asked about her real father, Carolyn finally came clean to Jack about what took place all those years ago. She expected a strong reaction, but was unprepared for the depth of his anger about the considered choice she made.

This series sees Carolyn treading a difficult path, wanting to protect both George and her daughter by keeping Anna's identity a secret from Jack. But Jack is determined to discover who his daughter is, and to hell with Carolyn's reasoning.

Add to the mix the complication of past romantic feelings being rekindled, and Carolyn is in for a very tumultuous ride.

As they find themselves falling in love again, it will take all of her considerable skills to find a way to vanquish Jack's torments and demons – and when the horrific truth emerges, it isn't something she expects.

"A passionate and free spirit at heart, Carolyn is longing for the man who will embrace her and all she has become," Sara says. "She can only hope it is her long lost love, Jack. She must face her mother as the independent woman she now is and accept the consequences of her choices, whatever the outcome may bring."



A PLACE ^{TO} CALL HOME on 

SARA WISEMAN

STARS AS CAROLYN BLIGH

SARA WISEMAN REMEMBERS PRECISELY THE MOMENT SHE KNEW SHE WANTED TO BECOME AN ACTOR.

It was 1994 and she was asked to stand in for Kate Winslet on the set of Peter Jackson's film *Heavenly Creatures*.

"It was like being hit in the stomach with a sledgehammer," she recalls.

After completing a Bachelor of Performing & Screen Arts in Auckland in 1988, Sara has consistently worked on both stage and screen.

Her big break came in 2001 when she was offered the lead in the TV series *Mercy Peak* as Dr Nicky Sommerville, which earned her nominations for Best Actress at the 2002, 2003 and 2005 NZ Film and Television Awards.

More TV roles followed in *Outrageous Fortune*, *The Cult*, *Shortland Street*, *The Almighty Johnsons* and *Crownies*. She won Best Actress for playing Kate Sheppard in *What Really Happened: The Women's Vote* at the NZ Television Awards in 2012.

On the big screen, Sara's starred in *Luella Miller*, *Sione's Wedding*, *Matariki*, for which she won Best Supporting Actress in a Feature Film at the NZ Film and Television awards in 2011, and *The Insatiable Moon*, which earned her Best Lead Actress in a Feature Film nomination at the same awards.

Her theatre appearances are numerous, including *Death of a Salesman*, *Amy's View*, *Collected Stories*, *Cabaret* and *Ladies Night* with the Auckland Theatre Company; *Under Milk Wood* and *This Is How It Goes* at the Silo Theatre; *Proof* with Lethal Set Productions; *Killer Joe* and *The Vagina Monologues* with Royale Productions and her portrayal of Roberta in *Danny and the Deep Blue Sea* earned her Best Theatre performance of 2004 according to Metro Magazine. Her latest stage performance was in 2013; *Hate* with Malthouse in Melbourne.

Born in Auckland, Sara moved to Sydney in 2011 with husband, actor Craig Hall, also her co-star on *A Place to Call Home*.

They've worked together several times on stage or screen, the latest being the 2013 Sydney psychological thriller *Nerve* and last year's Tourism Western Australia campaign.

"It's weird and wonderful," she says of working with her partner on *A Place to Call Home*. "Wonderful because we are always aiming to rinse the most out of every scene we share. Weird because, when we are in a scene, I don't see Craig, I only see Jack."

When she's not busy acting, Sara guest tutors aspiring students at The Actors' Program, a one year, full time course she co-founded in Auckland in 2011 and records voiceovers for campaigns in both Australia and New Zealand.



A PLACE ^{TO} CALL HOME on 7

JAMES BLIGH

PLAYED BY DAVID BERRY

NEWLY MARRIED TO OLIVIA, AND WITH THE NEWS THAT HE IS TO BECOME A FATHER, JAMES STRUGGLES TO PUT HIS SECRET ATTRACTION TO MEN BEHIND HIM.

But the reappearance of an old flame, Harry Polson, throws his resolve. Determined to escape his desires and commit to his marriage, James decides to relocate to the city. When Harry asks for a kiss to remember him by, James momentarily succumbs to temptation, unaware farmhand Bert Ford has witnessed the moment.

James arrives in the city, determined to seek professional help to cure his “perversion”. Olivia is by his side, heartened by James’ commitment to her and their unborn child.

But when Bert blackmails George, propelling him to the city to confront his son, James suffers a breakdown and is committed to an institution. Undergoing electro-shock treatment, James descends into a living hell, increasingly disoriented and confused.

This series sees James continue to struggle between his private nature and the expectations placed on him. With his loved ones prevented from seeing him in hospital, James is isolated, at the mercy of a zealous medical fraternity determined to “cure” him at all costs.

It will take all of James’ courage to face his demons and escape his self-imposed prison.



A PLACE ^{TO} CALL HOME on 

DAVID BERRY

STARS AS JAMES BLIGH

WHILE DAVID BERRY'S ALWAYS HAD A KEEN INTEREST IN ACTING, THE ROAD THAT'S LED HIM TO HERE HAS BEEN LONG AND WINDING.

"I've always been searching for the thing I wanted to do. I think I might have found it," he smiles, acknowledging his fortune in landing the complex role of James in *A Place to Call Home*.

Born in Toronto, Canada, to Australian parents, David Berry moved to Sydney when he was seven. While at school, he developed a passion for music and the arts and was awarded a full scholarship for singing and violin.

Throughout school, David balanced his studies and professional commitments to Opera Australia and other independent production groups.

After finishing high school, he was awarded an academic scholarship to study at one of the world's top ranked universities, McGill in Montreal, where he completed a B.A. in Political Sciences and Cultural Studies.

Returning to Australia, he began his Masters in Media Practice at the University of Sydney, while also working as a researcher in the newsroom for Channel Seven.

Shortly after, David decided to abandon a career in media and return to his true passion, the performing arts.

He was accepted into the National Institute of Dramatic Art (NIDA) in 2008, where he performed in several theatre productions: *A Midsummer Night's Dream*, *A Threepenny Opera*, *Medea Material*, *Assassins* and *Lost Illusions*.

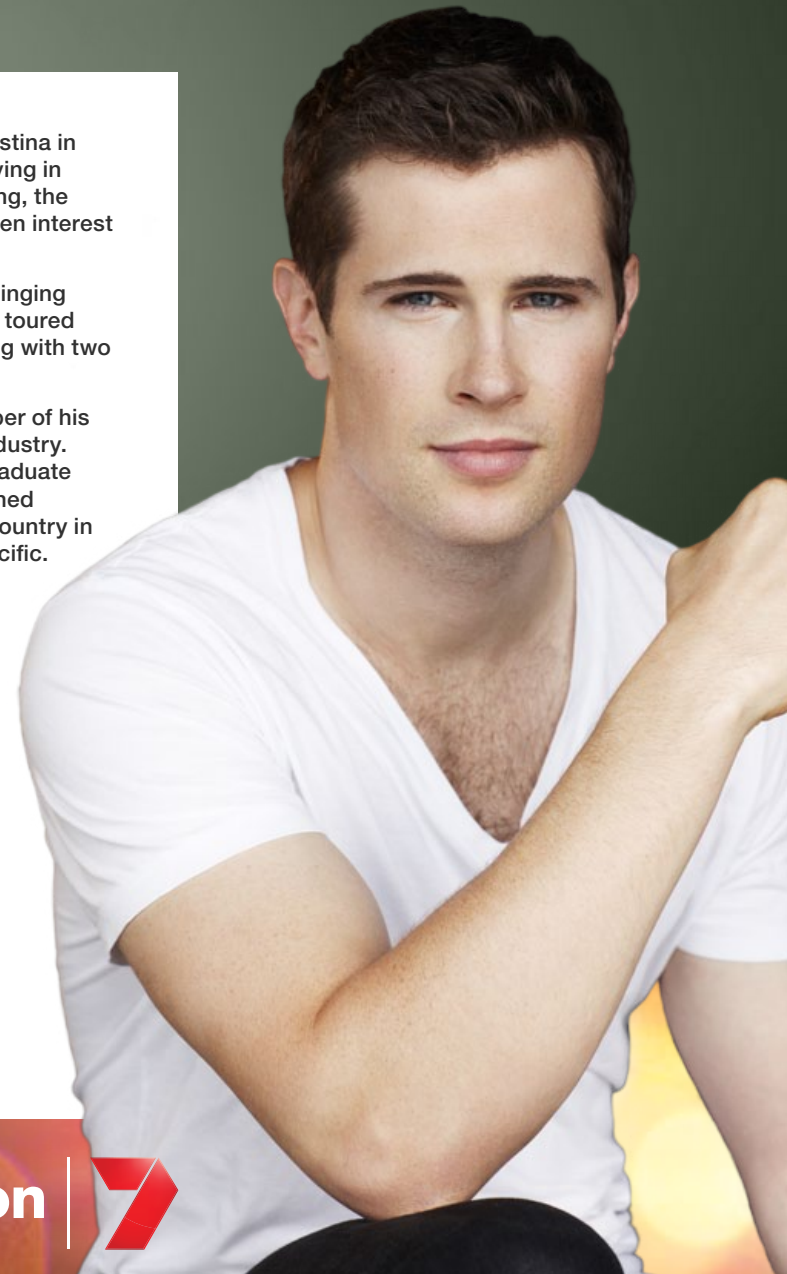
After completing his studies in 2010, he landed parts in *Home and Away* playing Logan in a love triangle storyline opposite Samara Weaving (*Indi*) and Luke Mitchell (*Romeo*) and *Miss Fisher's Murder Mysteries*.

A Place to Call Home is his first major television role. "It's a terrific opportunity," he says. "This has got real dimensionality to it. The stakes are real and strong. It's wonderful to be part of something that's so ambitious."

David married law student Kristina in 2012, who he met whilst studying in Canada. When he's not working, the *Daniel Day Lewis* fan has a keen interest in music and singing.

As a member of the all-male singing group *Jersey to Motown*, he's toured all around Australia performing with two of his best friends.

David, 30, isn't the only member of his family in the entertainment industry. His younger sister, WAAPA graduate Caitlin Berry, is an accomplished performer, who's toured the country in *Doctor Zhivago* and *South Pacific*.



A PLACE TO CALL *HOME* on 

OLIVIA BLIGH (nee Brackley)

PLAYED BY ARIANWEN PARKES-LOCKWOOD

OLIVIA CONFRONTED THE HEARTBREAKING TRUTH ABOUT HER HUSBAND JAMES AND HIS ATTRACTION TO MEN LAST SERIES.

The subsequent discovery that he was in love with her own brother when he married Olivia only compounded her heartache.

Furious at Elizabeth for arranging the marriage as a cover for her grandson, Olivia felt condemned to a lifetime of compromise. The knowledge that Elizabeth's husband was also homosexual isn't a comfort – if anything, the thought that she too might become a bitter old woman like Elizabeth makes her situation worse.

On the brink of leaving James, the discovery that she's pregnant forced Olivia to reconsider her future. James' commitment to their unborn child, and his desperation to find a cure for his attraction to men, provided Olivia with a way forward.

The prospect of becoming a mother is the one ray of hope in a confusing time.

When James is admitted to hospital, Olivia remains loyal and deeply worried about her husband. Witnessing George's disgust and the tragic affect this had on her husband, Olivia spiritedly defended James, displaying unexpected strength.

Olivia is pushed to the brink of her endurance this series, with tragic circumstances forcing her into an unlikely alliance with an unexpected source. She proves she will do anything she can to hang onto the man she loves – even break the law...



A PLACE ^{TO} CALL HOME on 

ARIANWEN PARKES-LOCKWOOD

STARS AS OLIVIA BLIGH

A PLACE TO CALL HOME IS THE FIRST MAJOR TELEVISION ROLE FOR ARIANWEN PARKES-LOCKWOOD.

Scoring the part of Olivia Bligh was a dream come true for the talented 26-year-old. "I've always loved period dramas," she says. "I fell in love with this show straightaway. The 50s was such an exciting time because society was on the cusp of a new era and there was a sense of hope and possibility."

The name Arianwen, Welsh for white, was chosen by her parents as she was born on a wintry night in her hometown of Armidale, in the Northern Tablelands, NSW.

The acting bug hit when she played the title role in Hamlet in a school play when she was just 11 years of age. "I had this wonderful primary school teacher, Mr Grant, and he decided that for our end of year concert we were going to tackle Hamlet," she remembers. "I just loved it. That was the big spark for me."

She began attending classes at Stage One Theatre for Young People in her local area. Through her "wonderful mentor", Astrid Blake, she learned the beginnings of stagecraft and storytelling, and developed a love for the world of acting.

After finishing high school, having received the NSW Premier's Award for All-Round Excellence in the HSC, she scored her first professional role – again in Hamlet, but this time playing Ophelia – with the Shakespeare Globe Centre in Sydney.

It meant moving to Sydney at age 17. The following year she successfully auditioned for the National Institute of Dramatic Art (NIDA).

During her three years at NIDA, she performed in a variety of works including The Wood Demon (early draft of Uncle Vanya), The Servant of Two Masters and Julius Caesar. "Being at NIDA really developed my instincts," she says. "It was an incredible learning experience and an opportunity to make acting my profession as well as my love."

After graduating in 2008, Arianwen played Abigail in the Sydney Theatre Company's production of The Crucible, alongside cast mate Marta Dusseldorp.

She went on to appear in Underbelly: Razor, playing Dolly Green, wife of notorious gangster Frank 'The Little Gunman' Green as well as Foxtel's Tough Nuts and The Kangaroo Gang for BBC.

She has also become a busy voice-over artist, featuring in many national radio and television campaigns.

Arianwen is married to actor/writer/director Marcello Fabrizio, with whom she runs the production company Marshmallow Films.

Formed in 2010, their company has released a number of short films including The Filmmaker, which was a huge hit on the international festival circuit winning Best Short Film at the 2011 New Jersey Film Festival.

Following its success, she received the Marten Bequest Travelling Scholarship for acting and filmmaking, established by the late John Chisholm Marten to support talented Australian artists achieve their dreams. Marshmallow Films is currently in pre-production on a comedy series as well as a stop-motion animation series about a prawn called Prawn.

A woman of many talents, Arianwen also enjoys cooking vegan foods, yoga and learning French and Italian in her spare time.

She looks up to versatile actresses like Carey Mulligan and Anne Hathaway as well as her co-stars, particularly Noni Hazlehurst, whom she grew up watching on Play School.



ANNA BLIGH

PLAYED BY ABBY EARL

NEVER ONE TO FOLLOW THE EXPECTED PATH, ANNA HAS HER HEART SET ON MARRYING HANDSOME ITALIAN FARMHAND GINO POLETTI, IN SPITE OF SOCIAL CONVENTION.

An ardent supporter of following one's heart, Anna is a vocal champion of her father's new romance, hoping it will make him more open to her own relationship with Gino.

Dodging her grandmother's attempts at matchmaking with the wealthy Andrew Swanson, Anna begins a passionate affair with Gino.

She heads to the city to stay with her unconventional Aunt Carolyn, hoping she will help organise contraception. But it's too late – Anna discovers she is already pregnant.

Unable to terminate and unable to marry, Anna proposes she go abroad to give birth, and give the baby up for adoption.

To Anna's shock, Carolyn admits that she did exactly the same thing when she fell pregnant in her youth. Believing Anna might make a different decision if she knew the whole truth, Carolyn makes the startling revelation that the baby she gave up was in fact Anna. The woman Anna always thought was her aunt is actually her mother.

Anna suffered a miscarriage and she and Gino grieved the child they lost. The experience strengthened their commitment and they decided to spend the night together before telling their families of their intention to marry.

Discovered the next morning by Sarah, she offered to talk to George on their behalf. He is troubled and deeply sceptical of the relationship's long-term viability – but in light of his engagement to Sarah and extreme reaction to James' dilemma, he agrees to give the young couple a chance.

With the blessing of Gino's parents, it is agreed that Anna will move to the Poletti farm for three months to face the realities of living like a married couple – separate bedrooms of course.

This series sees Anna torn between two different worlds – her past life as a privileged Bligh, and her future life as a farmer's wife. It will take every ounce of courage to remain true to her heart, in the face of fierce societal and familial opposition.

Added to the mix is her dilemma over the news of her biological parents. Loyal to George, she wants to protect the man who raised her as his own daughter, while simultaneously curious over the identity of her real father.

Little does she know, he's closer to home than she realises...

A PLACE ^{TO CALL} HOME on



ABBY EARL

STARS AS ANNA BLIGH

ABBY EARL MAY HAVE ENDED UP A DANCER HAD IT NOT BEEN FOR HER ASTUTE BALLET TEACHER. "I REMEMBER MY TEACHER SAYING TO ME, 'ABBY! YOUR FACE MOVES MORE THAN YOUR FEET. YOU SHOULD BE AN ACTOR.'

Abby was only six at the time but her teacher's words rang true. "She was absolutely right. That's when I thought, 'I like the sound of that!'"

Throughout school, the awkward teenager found solace in drama. "My drama teacher would give me monologues and plays to read. Every lunch time I would take refuge in the drama room and read these characters and inhabit their world."

At the age of 15, Abby begged her parents to let her audition for Newtown's High School of Performing Arts. She got in but it meant a move to Sydney from her hometown of Broulee, on the south coast of NSW. "I was pretty innocent coming from the country," she says. "A small town girl moving to the heart of a busy city, it completely opened my eyes. It felt like I grew up overnight; each day brought new experiences, some good and some bad, but I grew because of them all."

For the next two years, she majored in drama and dance and represented Australia at the United Nations as a Global Youth Leader. After finishing high school, she scored her first television role in *Love My Way*. Working alongside such accomplished performers as Asher Keddie and Dan Wyllie was a great learning experience. "They just treated me like an equal," she remembers.

In 2009 she began a three-year acting course at the Western Australian Academy of Performing Arts (WAAPA), during which she starred as Anna in *Anna Karenina*, Clytemnestra in *The Oresteia* and Masha in *The Seagull*.

Whilst still at drama school, during her third year, she scored a lead role in *The Great Mint Swindle*, playing Diana, the love interest of Todd Lasance's character Peter Mickelberg. Her other co-star Grant Bowler became a mentor to her during the shoot and long after.

"He instilled me with confidence and a sense of self-worth on set," she says.

After graduating from WAAPA – where she won two awards for Best Female Actor in Theatre and Best Female Actor in Film – she landed a role on *Underbelly: Badness* before winning the part of Anna Bligh. "I wanted the role so badly, after reading

the script I realised Anna was by far the most interesting character I had read since graduating, so I knew I had to tell her story," she says.

All it took was one audition and the part was hers. Acting opposite the likes of Noni Hazlehurst, Marta Dusseldorp and Brett Climo is a dream come true. "You can't ask for better mentors when you're just out of acting school."

Along with her co-stars, Abby lists Oscar winner Cate Blanchett, Kate Winslet and Tilda Swinton among her favourite actors along with veterans Meryl Streep, Helen Mirren and Jackie Weaver. "I like careers that have endured; actors who have gone through what Streep calls the 'age of disappearance' where they just drop off our screens once they turn 50. These women have come through that no man's land and made it to the other side."

During her last production break, Abby starred in the Bell Shakespeare's production of *Phèdre* opposite Catherine McClements.

Abby, 25, still enjoys dancing in her spare time, along with reading and has an interest in international politics and humanitarian issues.



GINO POLETTI

PLAYED BY ALDO MIGNONE

SON OF ITALIAN FARMHANDS, GINO HAS BEEN RAISED AS A GOOD CATHOLIC BOY. BUT UNLIKE HIS TRADITIONAL PARENTS, GINO HAS A DREAM OF LIFE UNFOLDING BEYOND THE PATH EXPECTED OF HIM.

In love with the beautiful and wealthy Anna Bligh, Gino is in many ways the epitome of the modern generation – keen to escape the stuffy attitudes of the past and forge a new life, not bound by class restraints.

He knows they face major opposition from both their families, not least because of their religious differences. But for a free spirit like Gino, the yearnings of his heart are far more important, and he's never doubted the depth of passion between him and Anna.

Despite Anna's unswerving devotion to her Italian beau, he is threatened by the presence of rich socialite Andrew Swanson, who persists in pursuing Anna as a potential bride.

Forced to keep his love a secret, Gino is often frustrated, and longs for the day when they can publicly declare their relationship.

A sensitive man, Gino helped Anna come to terms with the miscarriage of their unborn baby, organising a moving secret ceremony. Loyal to his family and hard-working, Gino craves a simple life, eked from the land – and one day, with Mrs Anna Poletti by his side.

This series sees Gino forced to become a man. Having a secret romance is one thing. The true test is negotiating the transition to public acceptance, especially in the face of formidable foes like Andrew Swanson and Elizabeth Bligh.

The challenge for Gino is to maintain his integrity and purity of spirit – the very qualities that made Anna fall in love with him all those years ago. Not an easy task when facing adversity at every step.

During his darkest moments, even Gino will wonder if the divide between him and Anna is too great.

A PLACE TO CALL HOME on



ALDO MIGNONE

STARS AS GINO POLETTI

FOR ALDO MIGNONE, THERE WAS NO LIGHT-BULB MOMENT WHEN HE KNEW HE WANTED TO BE AN ACTOR. HOWEVER, ROLE PLAYING WITH HIS FOUR OLDER SISTERS WAS A BIG PART OF HIS CHILDHOOD GROWING UP IN ADELAIDE.

"I've seen videos of us on Beta tape putting on performances with my sisters," he recalls. "I remember seeing a tape of me as a little cowboy not having any lines and being quite bored with it all. And then another one where I'm dressed as a woman by the fire place!"

After finishing school, Aldo dabbled in furniture design and toyed with the idea of becoming a chef but acting won out after his sister Louisa ventured into drama. "She was stoked and really supportive of my decision," he says.

He did several courses at Flinders University Drama Centre before moving to Sydney at the end of 2008 to study further. Two years into his acting studies, he won a role in the SBS action comedy series *Danger 5*, where he played Pierre, one of five international spies on a mission to kill Adolf Hitler. "That was so much fun to work on," he says. "It was ridiculous action and comedy mashed together."

Aldo's other credits include the popular web spoof *Italian Spiderman*. His theatre experience includes roles in *As You Like It*, *The Crucible*, *Waiting for Lefty* and *The Winter's Take* for NIDA.

Scoring a role on *A Place to Call Home* is a dream realised for Aldo, who lists Geoffrey Rush and Vincent Gallo among his acting idols. "Bevan Lee has created something amazing and I'm thrilled to be part of it," he says. "We've got an incredible cast and it's fantastic to be working with actors like Noni, who I grew up seeing on TV."

Working on the drama has been a family affair for Aldo. His real-life girlfriend Jacinta Acevski also guest stars in the series as Alma Grey, a nurse at Inverness Hospital. And his sister Louisa, who's appeared in *Rake* and the film *Two Fists One Heart*, was part of the casting process and encouraged Aldo to try out for the part of Gino. "I owe this to her," he says.

Away from the cameras, Aldo is an ardent foodie who enjoys cooking and trying out new restaurants, especially Italian and Spanish. "I'm not the best cook but I love to cook and watch other people cooking," he says.

In the future, the 29-year-old hopes to establish a production company with his acting friends. "There are so many great performers, directors and writers out there and it's a struggle to get projects off the ground," he says. "So I'd love to form a creative hub where we write and create our own films and theatre shows. That would be amazing."



A PLACE ^{TO} CALL HOME on 7

ANDREW SWANSON

PLAYED BY MATT LEVETT

WHEN YOUR FATHER IS ONE OF THE STATE'S TOP POLITICIANS AND YOUR FAMILY IS ONE OF THE WEALTHIEST IN THE COUNTRY, IT'S NATURAL TO HAVE AN AIR OF SELF-IMPORTANCE AND ENTITLEMENT.

But it's also a strain being the target for mothers and grandmothers with daughters of an eligible age. Especially when you're as handsome as Andrew is.

Andrew Swanson is what is known as a good catch. But he has assiduously avoided his mother's machinations to match him with the daughter of some good family.

It's not that he doesn't want to marry. It's just that he wants to marry a woman with some fire. And one who is physically and sexually stimulating. Until he finds her, he's happy to be footloose and fancy free.

"As the son of a very wealthy politician, Andrew has a real sense of entitlement," Matt says. "But there's a lot of pressure from his family to get married and settle his playboy ways."

That is, of course, until Anna Bligh comes on to his radar. Not only does she tick all of the boxes, but she also has something he's never experienced before – the ability to say 'no'.

It's not a word that Andrew readily accepts. And Anna has no idea how dangerous Andrew can be when his affections are spurned. "He enjoys the challenge of trying to win her over," Matt says.

In this season, Andrew has his sights set on avenging the slight to his honour and is determined to make Anna pay – if not directly, then by causing harm to the Bligh family in some way.

And little does Olivia suspect that she's an integral part of his plans for revenge....



A PLACE ^{TO} CALL HOME on 

MATT LEVETT

STARS AS ANDREW SWANSON

MATT LEVETT ALWAYS KNEW HE WANTED TO BE AN ACTOR. IT ALL STARTED IN THE BACKYARD OF HIS FAMILY'S SYDNEY HOME WHEN HE'D PERFORM WITH HIS FAMILY AND FRIENDS.

"When I was very young my older brother Simon would direct these plays for the neighbourhood," he says. "He would put on these great musical circuses where all the kids would come to our place and play various roles. I was always stuck playing the lion and he was always the ring leader so I actually never got to say much...just roared really. I was really good at roaring.

"I did a lot of plays and musicals at high school but I never thought I'd be crazy enough to make a career out of it."

After finishing high school, Matt studied film at Macquarie University majoring in media and screen production. Then at age 23 he was accepted into the Western Australian Academy of Performing Arts (WAAPA) acting course, graduating three years later.

After guest roles in All Saints, Home and Away, Two Twisted and Rescue Special Ops, he scored his first big break in the 2010 ABC series Bed of Roses.

More roles followed in Winners & Losers and Dance Academy before he landed the role of Andrew Swanson in A Place to Call Home.

After a supporting role in the first series, Matt's role has been expanded in series two.

"Last year I had a taste of it," he says. "I was fortunate enough to be brought back this season. What I love about Andrew is that he is so determined to win at all costs, he has such a sense of entitlement and his schemes are so inventive, you never know what he has up his sleeve.

"Turning up for work was a real blessing. The costumes and sets were so rich and wonderful, dressing up in suits, driving around in fancy cars and portraying someone of such extraordinary wealth and power in the 1950s was a lot of fun to play."

Matt will also be seen this year in Foxtel's mini-series The Devil's Playground, where he plays a character completely removed from the world of Ash Park. "He's a street kid in the late 1980s who has to hustle, steal, and do whatever he can to survive so it was really the polar opposite. I had this crazy peroxided hair and a bit of mullet happening. I feel very fortunate to have played two very challenging, very different roles in the same year."

Matt counts Hugo Weaving, Cate Blanchett, Joel Edgerton, Phillip Seymour Hoffman and Michael Fassbender among his acting idols. "I like actors that are able to move freely from stage to film, I also look up to people that have created their own work."

In his spare time, Matt enjoys travelling and trekking with Nepal, Vietnam, Israel and Jordan among his past expeditions.

The 30-year-old is also a writer and director. His 2012 short Unwanted Friend was a finalist in the world's biggest film festival Tropfest.



A PLACE ^{TO} CALL HOME on 7

ROY BRIGGS

PLAYED BY FRANKIE J. HOLDEN

A FARMER WHO'S LIVED IN THE SAME HOUSE HIS WHOLE LIFE, ROY'S INNATE SENSE OF HUMOUR AND KINDNESS HAS BEEN HIDDEN BENEATH A GRUFF VENEER FOR MANY YEARS, THE REACTION TO A STRING OF TRAGEDIES IN HIS LIFE.

Losing both sons in the War, and then his wife soon after of a broken heart, Roy retreated behind a crusty grumpiness, designed to keep people at bay.

After a rocky beginning, Roy senses a kindred spirit in Sarah Adams, a woman guarding similar heartache.

Last season they formed a close bond, eventually leading to Roy inviting Sarah to move into his farmhouse. She's like a daughter to him, and she has come to rely on his fatherly advice.

This series sees Roy and Sarah depend on each other in ways they never expected. Sarah's move to Ash Park affects Roy more than he'd ever let on. But one thing's never in doubt – Sarah's got a lifelong mate in Roy Briggs, and he'd move heaven and earth to protect her.

A PLACE TO CALL HOME on 



FRANKIE J. HOLDEN

STARS AS ROY BRIGGS

FRANKIE J. HOLDEN IS RECOGNISED AS ONE OF AUSTRALIA'S MOST VERSATILE AND POPULAR PERFORMERS.

He was born in 1952, the same year the FJ Holden was manufactured, which he adopted as his stage name.

Frankie began his show business career in the 1970s with the legendary rock group Ol'55, alongside Wilbur Wilde. After disbanding in 1981, Frankie went on to forge a successful television and film career. He has created some of Australian television's most memorable characters through leading roles in shows such as Police Rescue, Round the Twist, Something in the Air, Underbelly and Embassy.

He has also played guest roles in virtually every drama and sitcom on Australian television such as Prisoner, A Country Practice, The Strip, All Saints and Blue Heelers. In 1990, he was awarded Best Actor in a Telemovie by the Australian Film Institute for his performance in Police Crop.

He's also a successful television presenter. From 1993 to 1996, he roamed the world as a reporter on The Great Outdoors. In the mid-1990s, he hosted his own live variety program In Melbourne Tonight for three years, which he lists as one of his career highlights.

He's also appeared in more than 30 films both here and overseas. His film work includes High Tide, Evil Angels, The Big Steal, Proof, Hammers Over The Anvil, Fortunes of War and Clubland, where he earned an AFI Best Supporting Actor nomination. His 1989 film Return Home earned Frankie the Best Performance in a Feature Film award at the AFI's, an event he has hosted on three occasions.

In theatre, Frankie has appeared in The Best Little Whorehouse in Texas (1981), The Rocky Horror Show (1992), Grease (1994), Summer of the Seventeenth Doll (1995), Daylight Saving (2001/2002) and Don Parties On (2011).

Frankie says the key to his career longevity has been his versatility. "I think being able and willing to try different things. I have a broad range I can draw on."

Well versed in singing, presenting, acting, he's loathe to pick a favourite. "I love them all," he says. "I enjoy the variety. It keeps you fresh."

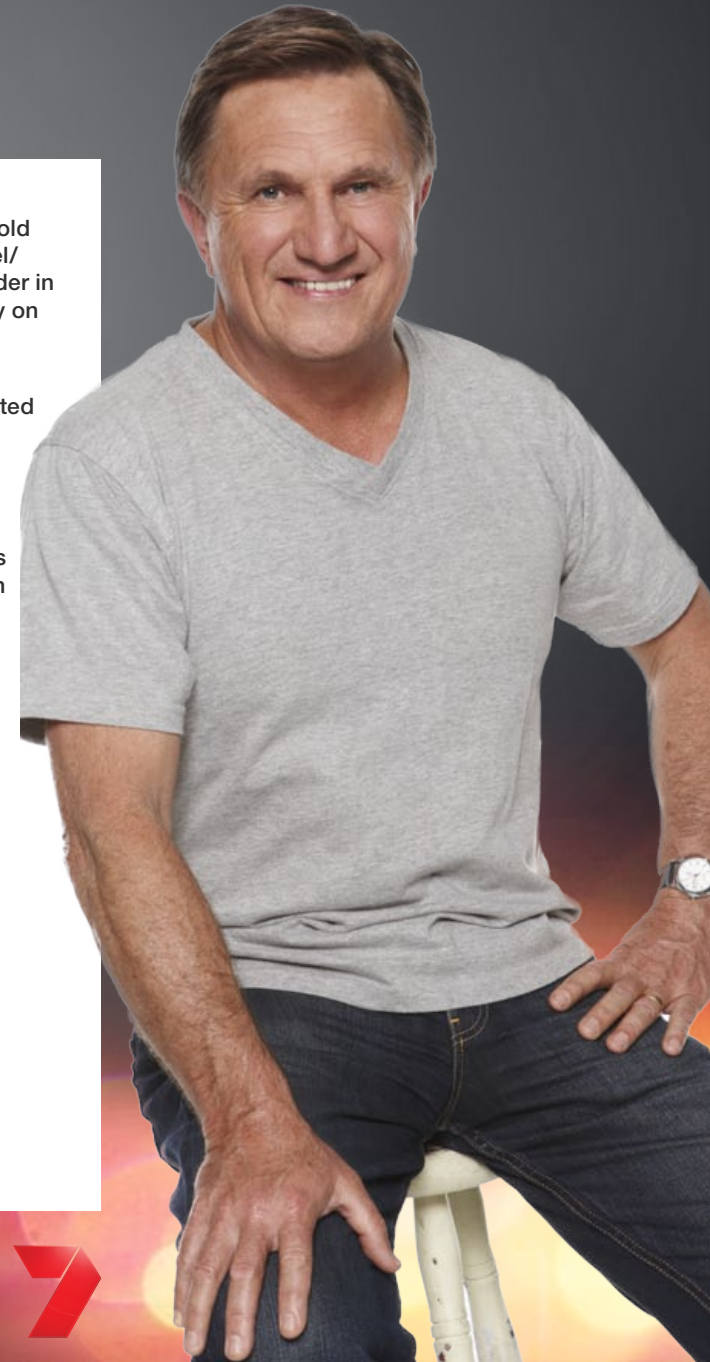
Frankie is married to actress Michelle Pettigrove, best known for her long running role as Kate Bryant in the much-loved series A Country Practice.

The pair, who are parents to 11-year-old Georgia Rose, hosted their own travel/caravanning show Discover Downunder in 2010 and currently appear as a family on What's Up Downunder.

It's a passion close to their hearts as owners of Tathra Caravan Park, situated close to their home on the Sapphire Coast of NSW.

He recently turned 60 and shows no signs of slowing down. "I have been blessed to have had a career that has been fun and in the process entertain people," he says.

When he's not working, he enjoys surfing and playing golf. He also still performs corporate gigs around the country.



A PLACE ^{TO} CALL HOME on 7



JASON VOLBEDA

For further information, please contact Seven Publicity Melbourne
T 0477 753 508 E JVolbeda@seven.com.au

A PLACE TO CALL HOME on 